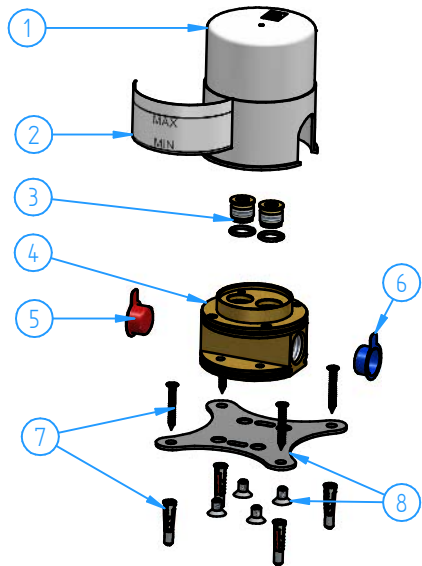
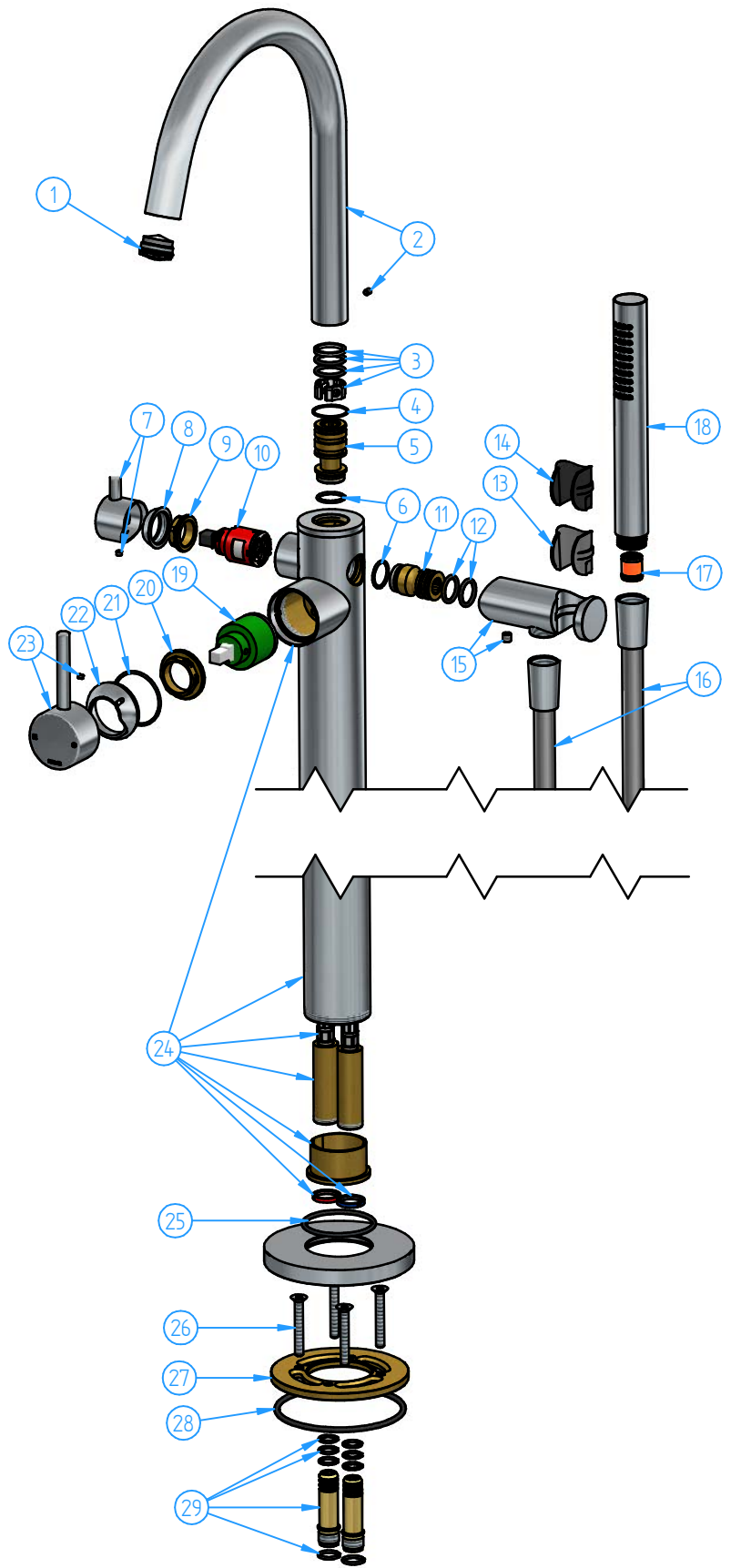


2	HBCB177-00	Concealed parts for floor-standing bathtub	1
1	B177EXT-00	Trim parts for floor-standing bathtub mixer	1
ID Nr	Code	Description	Pcs



8	HBCB177-002	Flange set	1
7	HBCB177-003	Fixing kit	1
6	HBCB105-20	Blu plug	1
5	HBCB105-21	Red plug	1
4	HBCB177-01	Distributor body	1
3	HBCB177-001	Plug set	1
2	HBCB177-06	Label	1
1	HBCB177-04	Plastic cover	1
ID Nr	Code	Description	Pcs



29	CB177-005	Connector kit	1
28	CB177-19	O.ring 88.5x3x53	1
27	CB177-07	Flange	1
26	CB177-14	Screw M6x45	4
25	CB177-003	Base flange cover set	1
24	AC177-004	Preassembled set for AC177EXT	1
23	B177-001	Mixer spout handle kit (with grub screw M4x3)	1
22	AC177-06	Cartridge cover	1
21	AC177-08	O.ring 37.82x1.78	1
20	BR005-05	Locknut	1
19	BR005-001	Ceramic cartridge ø35	1
18	M354-00	Hand shower	1
17	M352-002	Check valve CV15-FR with flow regulator 9.0 l/min (Neoperl 31.2018.100)	1
16	M015-00	Flexible hose	2
15	CB177-004	Shower support	1
14	CB077-19	Plastic insert (black)	1
13	CB077-18	Plastic insert (gray)	1
12	B077-03	O.ring 15.6x2.62	2
11	CB177-15	Connector for hand shower support	1
10	CB177-002	Cartridge ø25 (close type)	1
9	B002-04	Locking nut	1
8	AC177-07	Cartridge cover	1
7	CB177-001	Handle kit	1
6	CB077-02	O.ring 17.17x1.78	2
5	B077-37	Spout connector	1
4	B077-22	Anti-friction ring	1
3	B077-005	Washers set for B077 spout	1
2	B123-002	Spout set	1
1	B077-001	Flow guide ( Cache STD )	1
ID Nr	Code	Description	Pcs

		Sheet 1 of 3	
N° REVIEW		Date	Scale 1:5
Description			Material
Floor-mounted bathtub mixer, with flexible hose and hand shower			Weight 0 kg
Code B177-00	Date of issue 04/10/2024	Chamfers not quoted 0.5x45°	Finishing SM Grinding LU Polishing CR GN
This drawing is property reserved of Hotbath Srl. Without express authorization, the copying, distribution and utilization of this document as well as the communication to others is prohibited			
hotbath italian bathroomware			