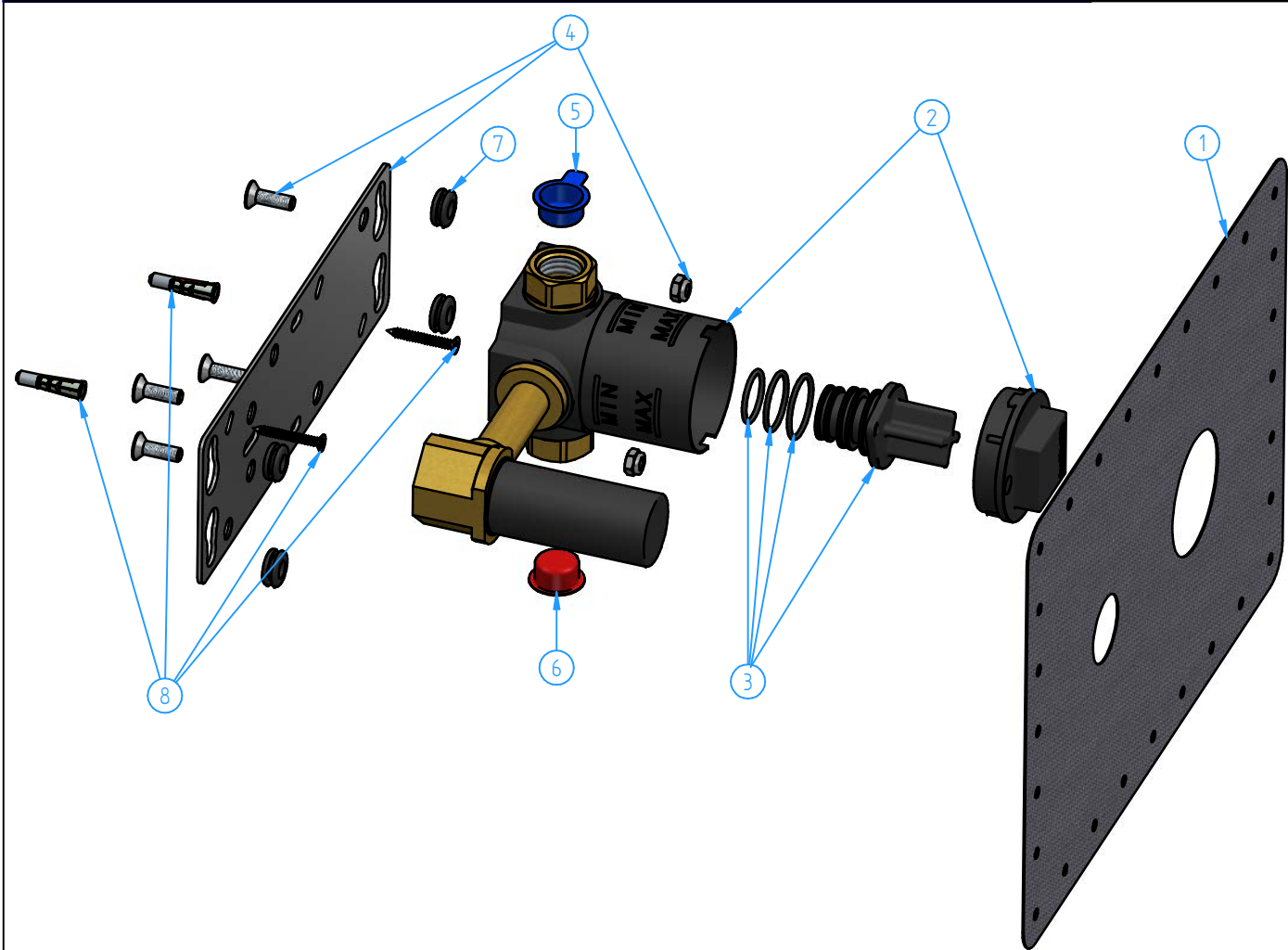
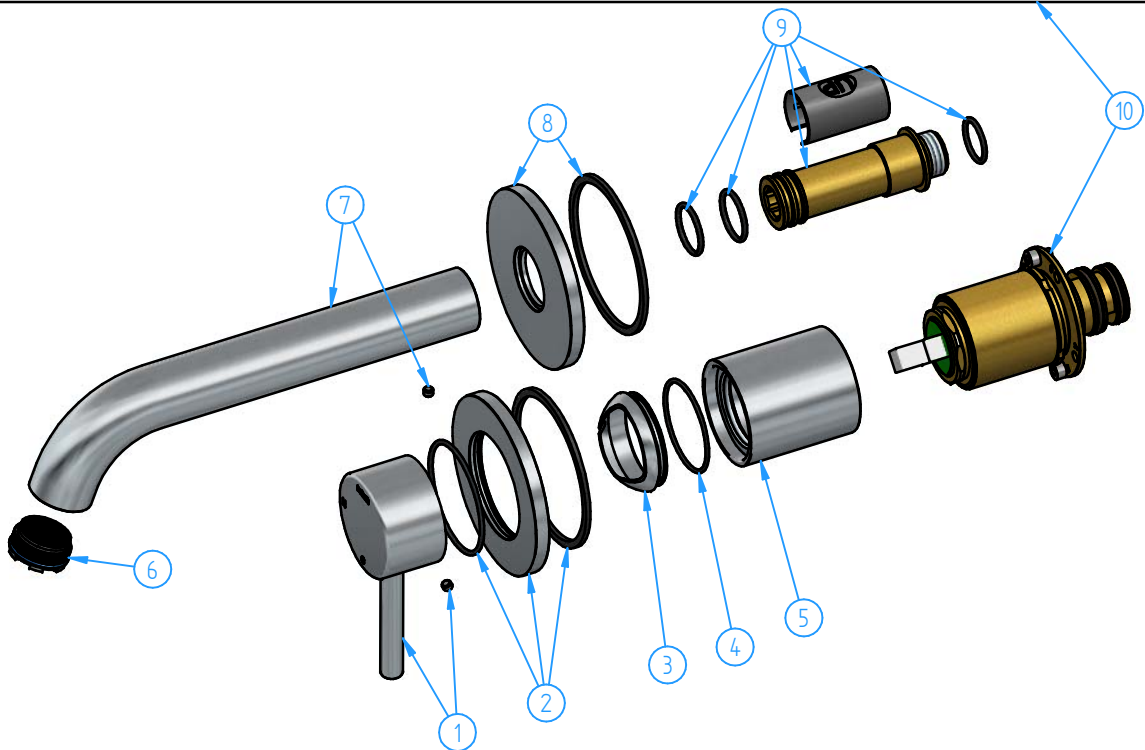
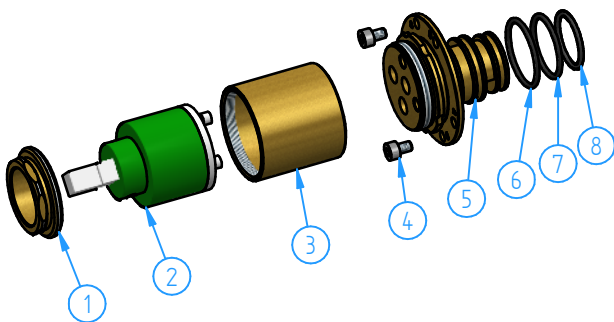


2	B105EXT18-00	Trim Parts for wall-mounted washbasin mixer, with 18 cm spout	1
1	HBCB105-00	Concealed part for wall-mounted mixers	1
ID Nr	Code	Description	Pcs



8	HBCB105-005	Fixing kit	1
7	HBCB105-004	Shock/noise absorber set	1
6	HBCB105-21	Red plug	1
5	HBCB105-20	Blu plug	1
4	HBCB105-003	Installation flange set	1
3	HBCB105-002	Plug set	1
2	HBCB105-001	Preassembled set for HBCB105	1
1	HBCB105-16	Wall gasket	1
ID Nr	Code	Description	Pcs

8	AR095-04	O.Ring 20x2	1
7	HBCB105-17	O.ring 23x2	1
6	HBCB105-18	O.ring 25x2	1
5	AC131-02	Mixer/diverter body	1
4	HBCB105-09	Screw M4x6	2
3	CB031-10	Cartridge cover	1
2	BR005-001	Ceramic cartridge ø35	1
1	CB003-09	Locking nut	1
ID Nr	Code	Description	Pcs



10	AC131-002	Cartridge set for mixer	1
9	B105-001	Spout connection set	1
8	B195FL70-00	Spout flange set	1
7	B195-001	18 cm spout set	1
6	B104-002	Adjustable aerator M24x1 with flow regulator 1,5 gpm	1
5	AC131-03	Cartridge cover	1
4	AC023-05	O.ring 36x1.5	1
3	AC023-01	Cartridge cover	1
2	B105FL75-00	Wall flange ø77 (for mixer and diverter)	1
1	B103-001	Handle kit (with grub screw M4x3)	2
ID Nr	Code	Description	Pcs

		Sheet 1 of 3	
N° REVIEW		Date	
Description		Material	
Concealed washbasin mixer, with 18 cm spout		Weight	
Code		Date of issue	
B105-18-00		26/09/2024	
Chamfers not quoted		0.5x45°	
SM Grinding		LU Polishing	
CR GN		hotbath	
This drawing is property reserved of Hotbath Srl.		Without express authorization, the copying, distribution and utilization of this document as well as the communication to others is prohibited	
		italian bathroomware	