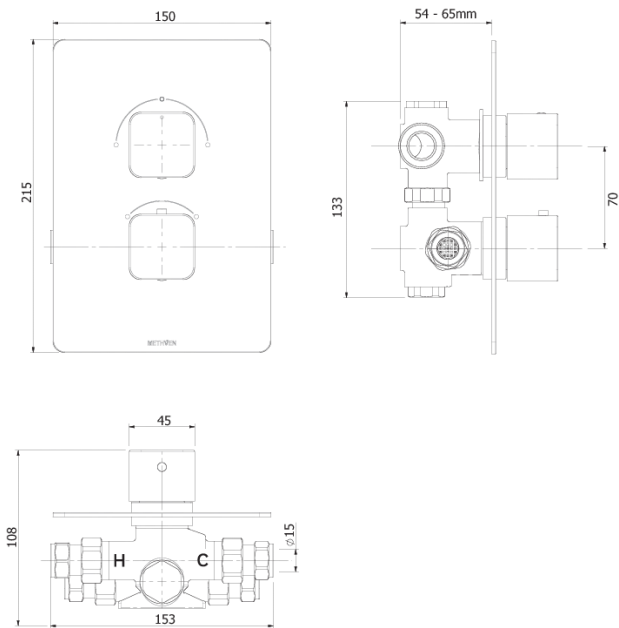


KIRI CONCEALED MIXER VALVE (2 OUTLETS)



- Diverter cartridge to two outlets
- 38°C temperature hot stop with override facility
- Concealed shower spindle extension available

CONSTRUCTION: Brass

CARTRIDGE/VALVE TYPE: Thermostatic

SUPPLY: Suitable for high pressure only

INLET CONNECTIONS: 15mm Compression

WORKING PRESSURES: 0.5 - 5.0 bar

OPERATION: Separate Flow And Temperature Controls

KIRI 2VDIV

Open Outlet Flow (Bar - l/min)

BAR	0.3	0.5	1.0	2.0	3.0	4.0	5.0
FLOW	N/A	10.7	11.2	11.8	12.8	12.6	12.7

Chrome



1404132



BC1660/0616

Please Note: Flow rate will be dictated by installation configurations.
Please ensure to check the appropriate flow restrictor information if applicable.
*Please refer to website for full warranty details.

FREEPHONE: 0800 195 1602 | FAX ORDERS: 08444 068 690 | EMAIL: SALES@UK.METHVEN.COM

THE INFORMATION ON THIS SPECIFICATION DOCUMENT WAS CORRECT AT THE DATE OF ISSUE. SOME VARIATION MAY OCCUR DUE TO THE MANUFACTURING TOLERANCES AND SITE SPECIFIC CONDITIONS.

methven.com
11/07/2017 14:11