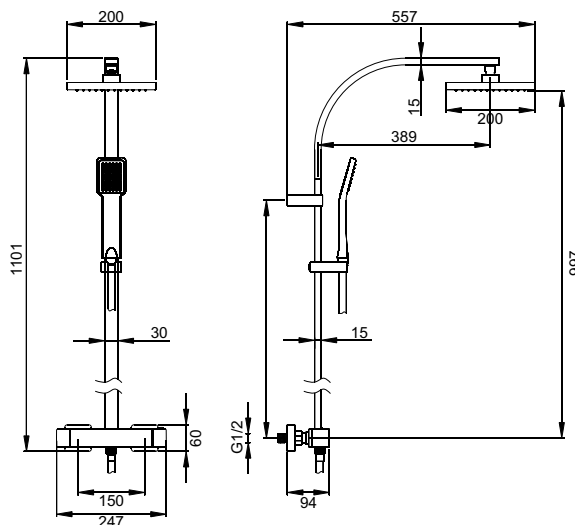
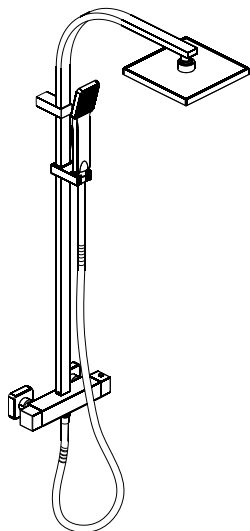


# Specification Sheet

## Thermostatic Shower Mixer

ADORA



## Product Specification

<b>Product Code:</b>	MB510SQ
<b>Finish:</b>	Chrome plated
<b>Construction:</b>	Bodies of tap are solid brass castings and the handles are zinc cast
<b>Valve Type:</b>	Thermostatic cartridge
<b>Supply:</b>	Suitable for all plumbing systems
<b>Inlet Connection:</b>	G1/2" male tail
<b>Water Pressure:</b>	Range from a minimum pressure of 0.2bar to a maximum pressure of 5bar
<b>Net Weight:</b>	4.2Kg

**Technical Advice:** For further information, please email [technical@adora-bathrooms.co.uk](mailto:technical@adora-bathrooms.co.uk) or visit [www.adora-bathrooms.co.uk](http://www.adora-bathrooms.co.uk)

**Guarantee:** The product carries a 5 year guarantee, **excluding** the ceramic (head/ cartridge) which is covered by a 12 month guarantee

## Flow Rates(litres per minute)

System pressure	0.1bar	0.2bar	0.3bar	0.4bar	0.5bar	1bar	2bar	3bar	4bar
MB510SQ (Deluge head)	2.6	3.9	4.7	5.5	6.3	7.9	12	15.4	18.3
(Showerhead)	2.7	4	5.2	6	6.7	9.6	14.4	18	21.2

We reserve the right to make technical modifications without prior notice