

| Qty. | Description |
|------|-------------|
|------|-------------|

|   |                |
|---|----------------|
| 1 | MAGNA3 40-40 F |
|---|----------------|



Note! Product picture may differ from actual product

Product No.: [97924266](#)

The Grundfos MAGNA3 is a circulator pump with permanent magnet motor that will fit both heating, cooling and domestic hot water circulation applications perfectly, making it the obvious choice for almost any building project – old or new.

With its unrivalled efficiency, all-encompassing range and built-in communication capabilities plus functionalities replacing system components, the MAGNA3 is ideal for building owners, engineers and specifiers looking to create high-performance systems for buildings.

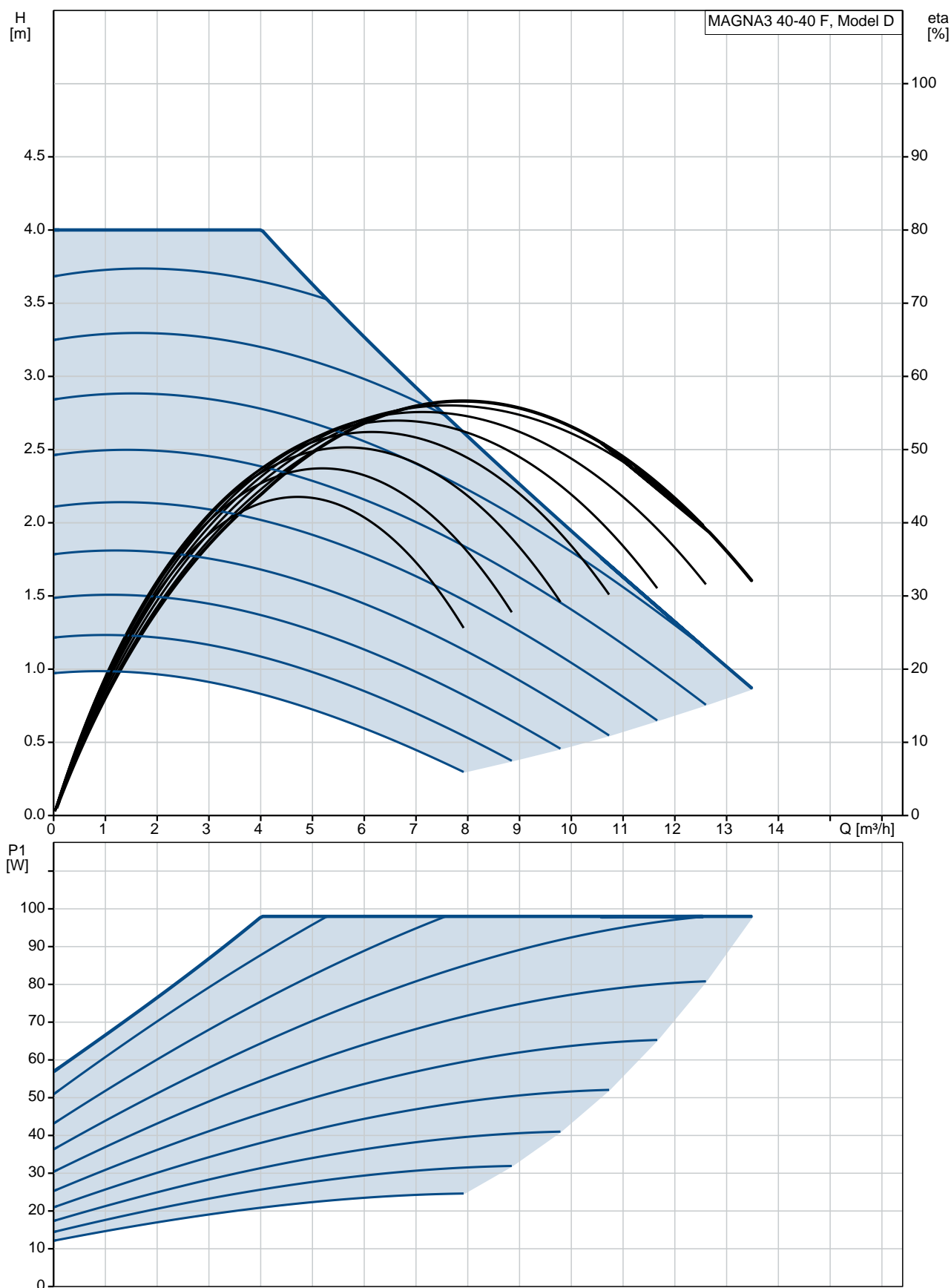
The MAGNA3 is a canned-rotor type, i.e. pump and motor form an integral unit without shaft seal and with only two gaskets for sealing. The bearings are lubricated by the pumped liquid.

The innovative clamp with only one screw enables easy repositioning of the pump head.

The MAGNA3 is a pump with no maintenance requirements and with extremely low Life Cycle Cost.

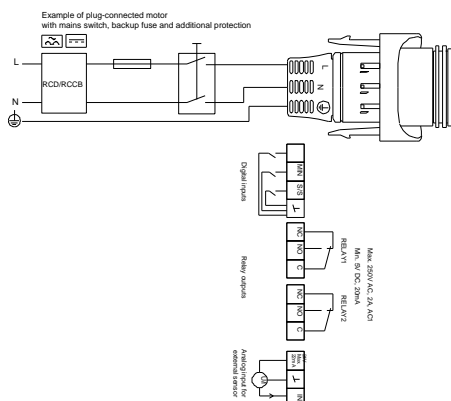
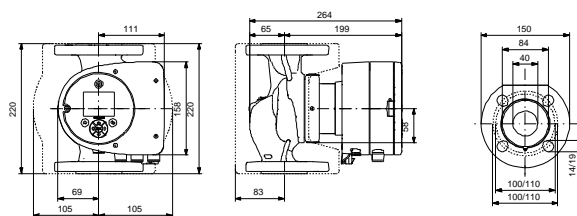
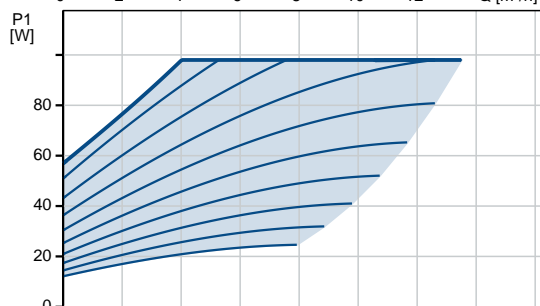
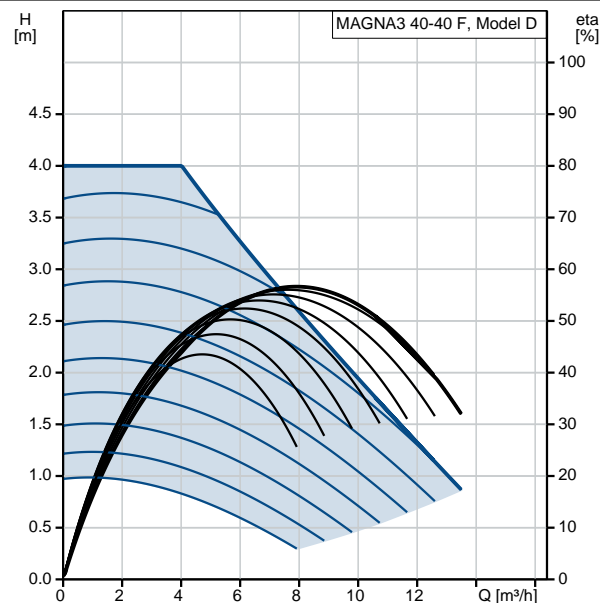


## 97924266 MAGNA3 40-40 F



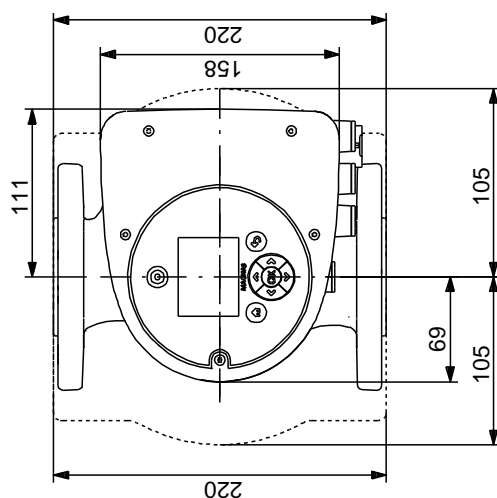
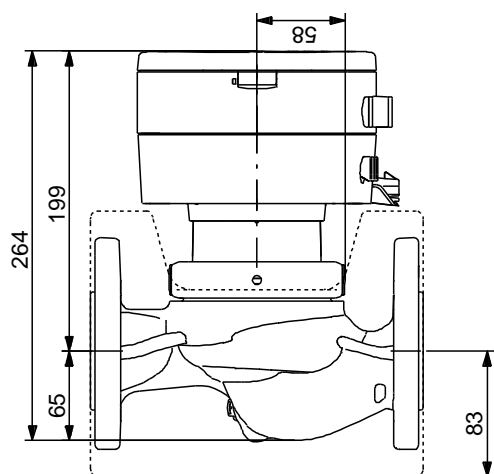
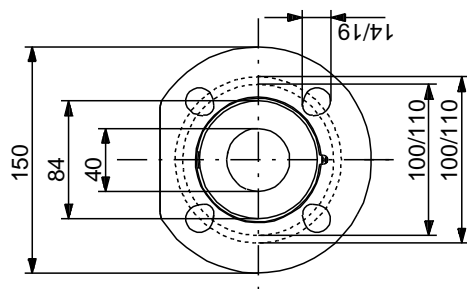


| Description                             | Value                          |
|---|--------------------------------|
| <b>General information:</b>             |                                |
| Product name:                           | MAGNA3 40-40 F                 |
| Product No:                             | 97924266                       |
| EAN number:                             | 5710626493418                  |
|   | 5710626493418                  |
| <b>Technical:</b>                       |                                |
| Rated flow:                             | 6.8 m³/h                       |
| Rated head:                             | 2.6 m                          |
| Head max:                               | 40 dm                          |
| TF class:                               | 110                            |
| Approvals on nameplate:                 | CE, VDE, EAC, CN<br>ROHS, WEEE |
| Model:                                  | D                              |
| <b>Materials:</b>                       |                                |
| Pump housing:                           | Cast iron                      |
|   | EN-GJL-250                     |
|   | ASTM A48-250B                  |
| Impeller:                               | PES 30%GF                      |
| <b>Installation:</b>                    |                                |
| Range of ambient temperature:           | 0 .. 40 °C                     |
| Maximum operating pressure:             | 10 bar                         |
| Flange standard:                        | DIN                            |
| Pipe connection:                        | DN 40                          |
| Pressure rating:                        | PN6/10                         |
| Port-to-port length:                    | 220 mm                         |
| <b>Liquid:</b>                          |                                |
| Pumped liquid:                          | Water                          |
| Liquid temperature range:               | -10 .. 110 °C                  |
| Selected liquid temperature:            | 60 °C                          |
| Density at selected liquid temperature: | 983.2 kg/m³                    |
| <b>Electrical data:</b>                 |                                |
| Power input - P1:                       | 12 .. 98 W                     |
| Mains frequency:                        | 50 / 60 Hz                     |
| Rated voltage:                          | 1 x 230 V                      |
| Maximum current consumption:            | 0.11 .. 0.87 A                 |
| Enclosure class (IEC 34-5):             | X4D                            |
| Insulation class (IEC 85):              | F                              |
| <b>Others:</b>                          |                                |
| Energy (EEI):                           | 0.18                           |
| Net weight:                             | 9.92 kg                        |
| Gross weight:                           | 10 kg                          |
| Shipping volume:                        | 0.019 m³                       |
| Danish VVS No.:                         | 380792041                      |
| Swedish RSK No.:                        | 5732583                        |
| Finnish LVI No.:                        | 4615361                        |
| Norwegian NRF no.:                      | 9042339                        |





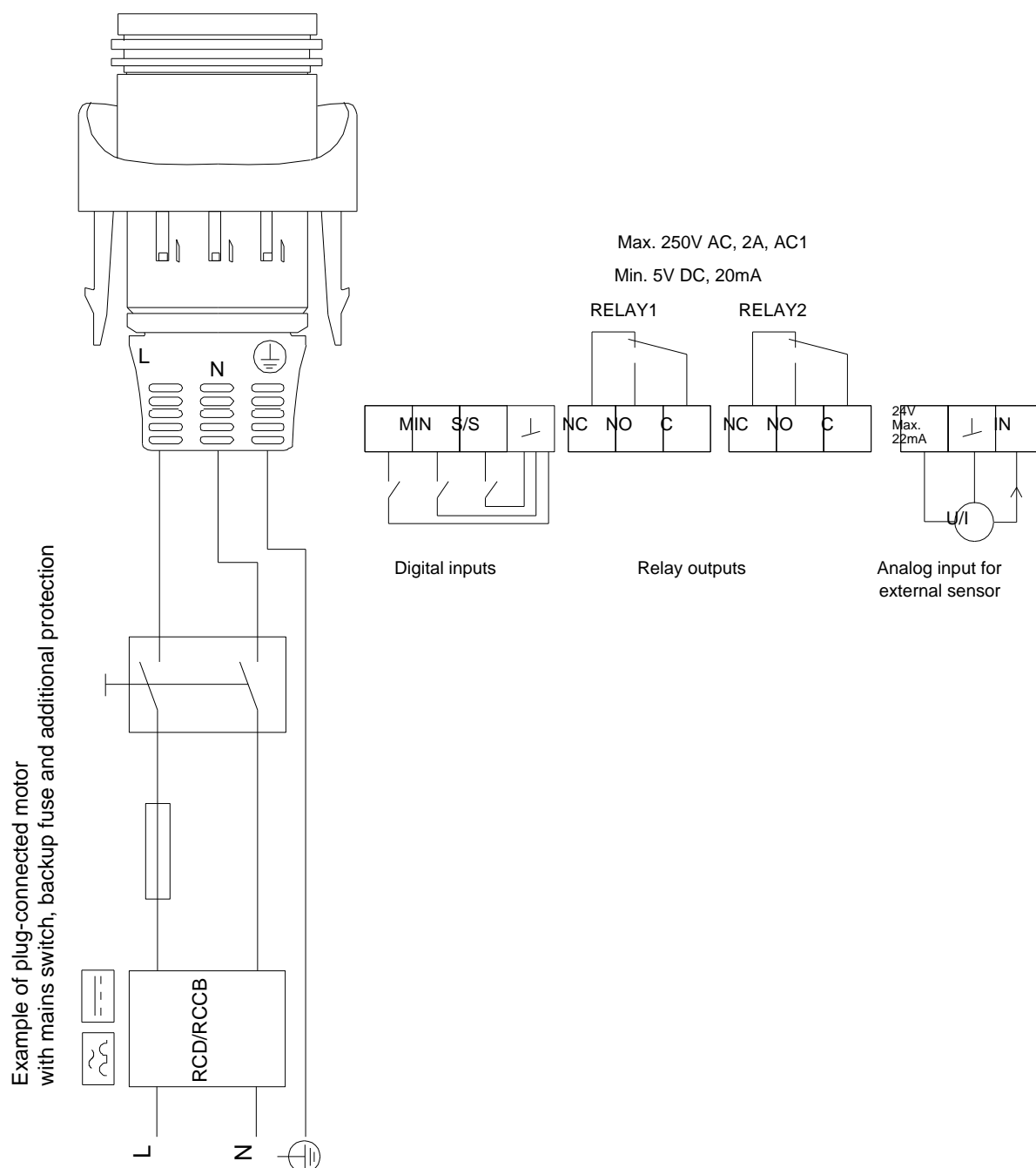
## 97924266 MAGNA3 40-40 F



Note! All units are in [mm] unless others are stated.  
Disclaimer: This simplified dimensional drawing does not show all details.



## 97924266 MAGNA3 40-40 F



Note! All units are in [mm] unless others are stated.