

Axor Uno²

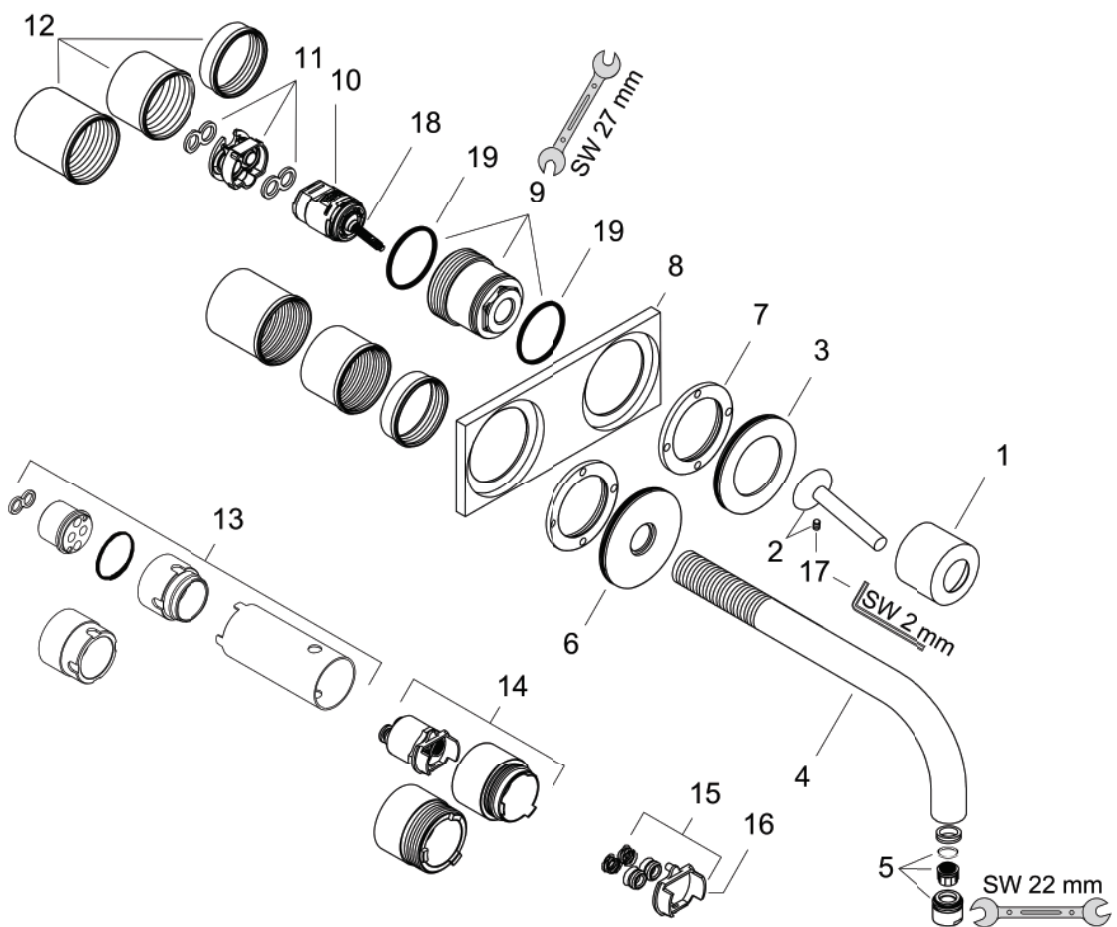
Single lever basin mixer for concealed installation with spout 225 mm and plate wall-mounted

Surfaces: **chrome** Article Number: **38115000**



Exploded Drawing

Year of production: >01/10



Axor Uno²

Single lever basin mixer for concealed installation with spout 225 mm and plate wall-mounted

Surfaces: **chrome** Article Number: **38115000**



Spare part list

Year of production: >01/10

Pos.	Description	Article Number	PC	PU
1	flange	96908000	9	1
2	handle	10092000	12	1
3	escutcheon for handle	96912000	10	1
4	spout 220 mm	97368000	16	1
5	aerator M18x1 (5 l/min)	95387000	9	1
6	escutcheon for spout	96913000	10	1
7	nut	97601000	6	1
8	escutcheon	96914000	17	1
9	nut	95645000	9	1
10	cartridge, assy	96339000	12	1
11	adapter for cartridge	95644000	5	1
12	fixing set	97971000	9	1
13	extension set for 13622180	31971000	0	1
14	extension set for 38111180	38982000	16	1
15	conversion kit	95643000	9	1
16	adapter for cartridge	97280000	2	1
17	hollow set screw M4x6	97767000	1	1
18	O-ring 21,95x1,78	95169000	1	1
19	O-ring 34x2	98383000	2	1
a	pop up waste	50001000	0	1
b	aerator laminar M18x1 (7 l/min)	96911000	9	1
c	base body	13622180	0	1
d	service tool for disassembling the handle	92124000	15	1