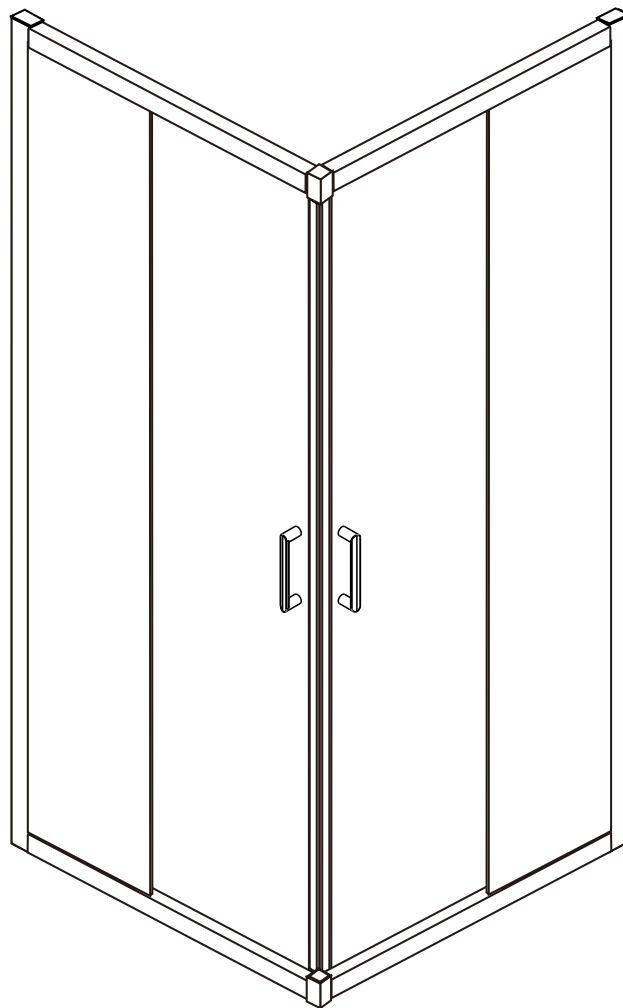


INSTALLATION INSTRUCTIONS



◆ General Information

Please inspect the product immediately upon receipt for transit damage, missing packs/parts or manufacturing fault. Damage reported later cannot be accepted. Please handle the product with care avoiding knocks and shock loading to all sides and edges of the glass.

Notes: Safety glass can not be re-worked.

Please read these instructions carefully before start of installation.

Special care should be taken when drilling walls to avoid hidden pipes or electrical cables.

Note: This product is heavy and may require two people to install.

Aftercare instructions

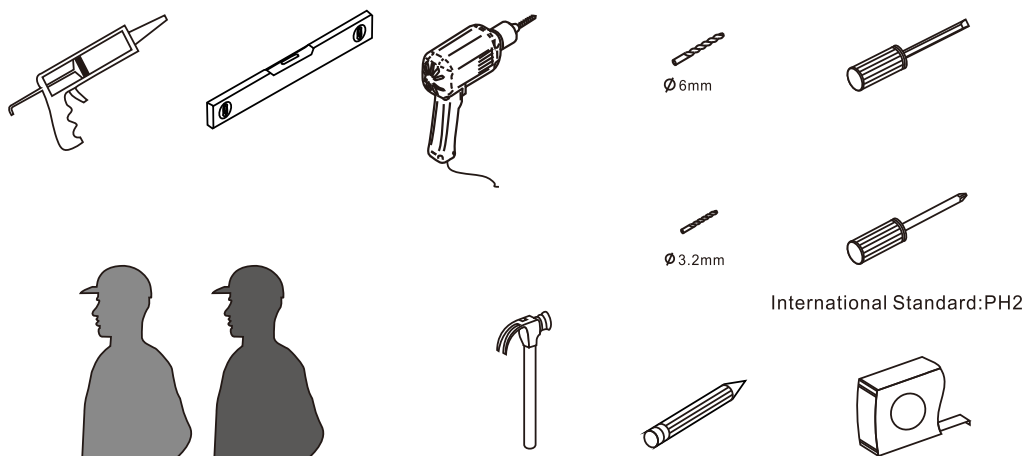
After use, your shower should be cleaned with soap and water. This is particularly important in hard water districts where insoluble lime salts may be deposited and allowed to build up.

Cleaners of a gritty or abrasive nature should not be used. Care should be taken to avoid contact with strong chemicals such as organic solvents and strippers.

Glass cleaners can be used but with caution, if in doubt contact the manufacturer of the cleaner in question.

Please keep these instructions for aftercare and customer service details.




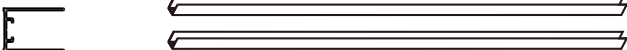


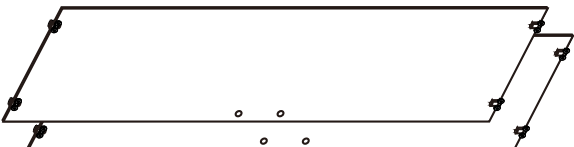




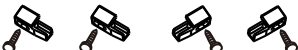

Tools Required



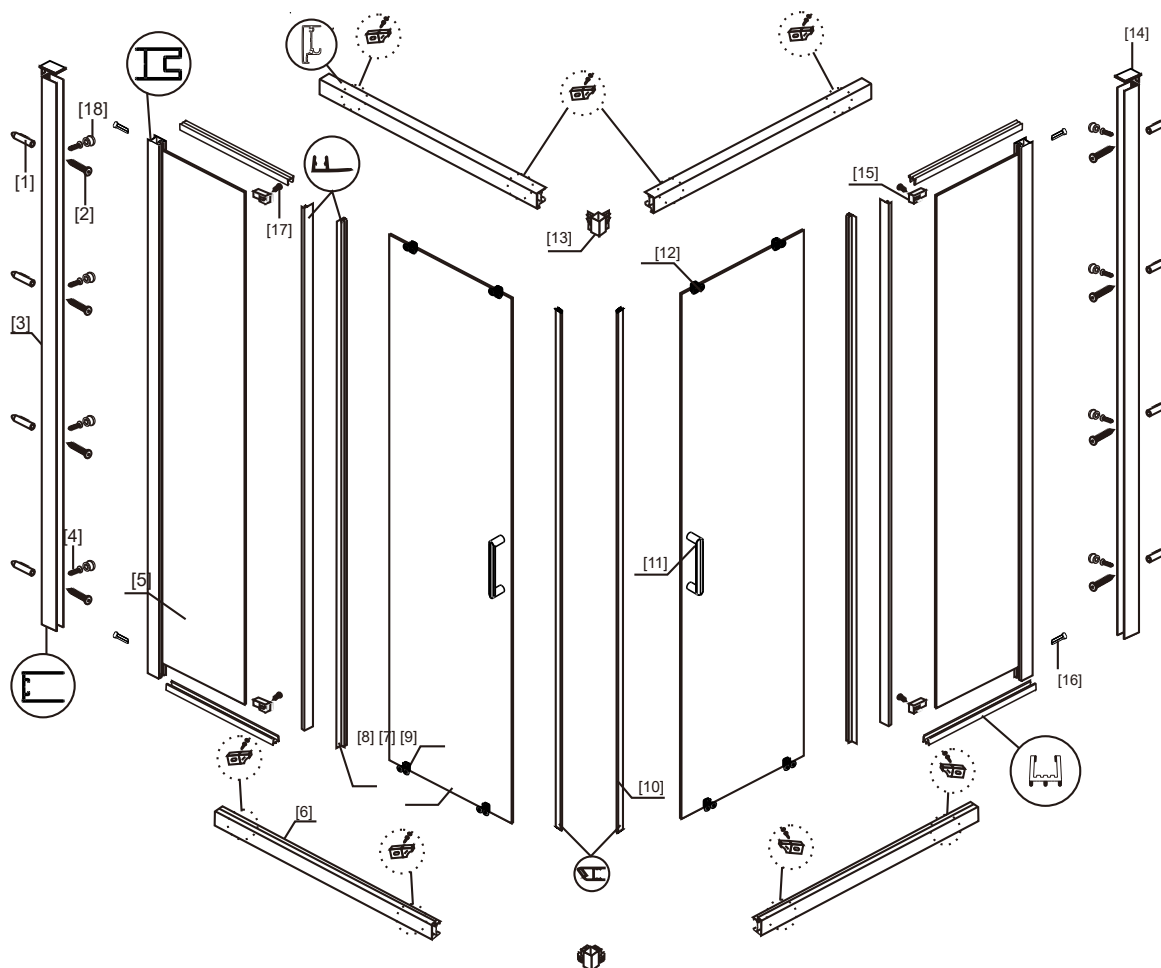
This product is heavy and may require two people to install.



◆ Box Contents:

1xInstallation Instruction.	➔	
[1] 8xWall Plugs. 8xScrews M4x35. 4xJumpers. 8xScrews Cover Caps.	➔	
[2] 8xScrews M4x8. 8xScrew Cover Caps	➔	
[3] 2xWall Post.	➔	
[4] 2xFixed Panels.	➔	
[5] 4xWater Deflectors. 4xDeflectors.	➔	
[6] 4xBottom Rollers. 2xDoor Panels. 4xTop Rollers.	➔	
[7] 2xMagnet Seal.	➔	
[8] 2xHandle Sets.	➔	
[9] 4x Rails (with stoppers pre-installed).	➔	
[10] 2xCorner Connector.	➔	
[11] 4xBumper Blocks. 4xScrews M4x10.	➔	
[12] 2xProfile Covers.	➔	

◆ Assembly Drawing

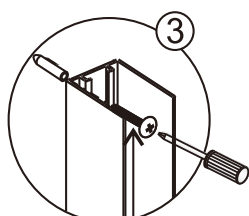
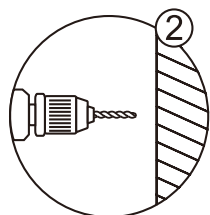
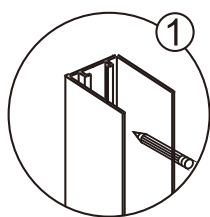


- [1] 8xWall Plugs
- [2] 8xScrews M4x35
- [3] 2xWall Posts
- [4] 8xScrews M4x8
- [5] 2xFixed Panels
- [6] 4xRails
- [7] 8xDeflectors
- [8] 4xBottom Rollers
- [9] 2xDoor Panels

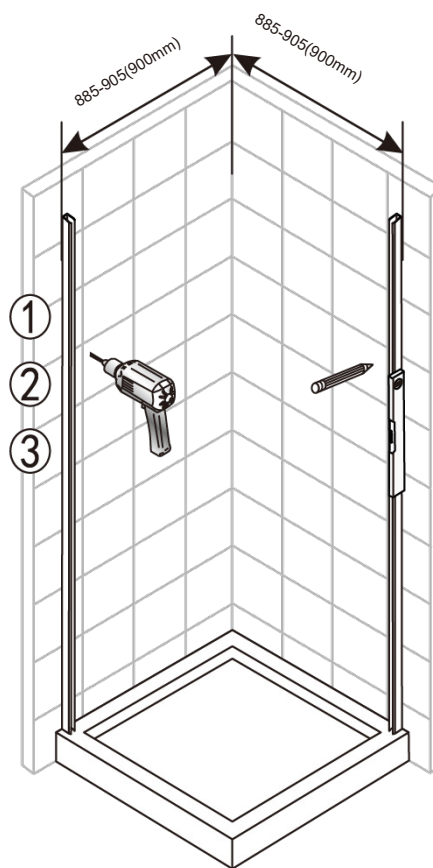
- [10] 2xMagnet Seals
- [11] 2xHandle Sets
- [12] 4xTop Rollers
- [13] 2xCorner Connectors
- [14] 2xProfile Covers
- [15] 4xBumpers
- [16] 4xJumpers
- [17] 4xScrews M4x10
- [18] 16xScrew Cover Caps

◆ Installation Steps:

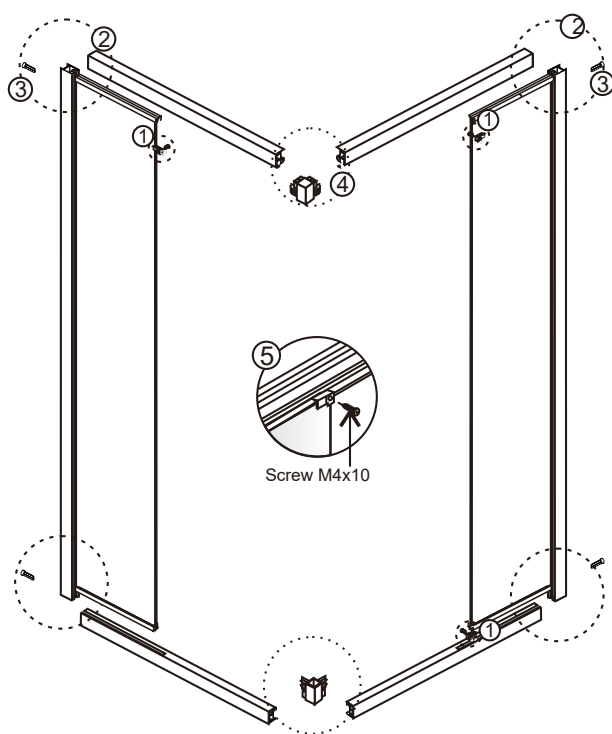
Step 1



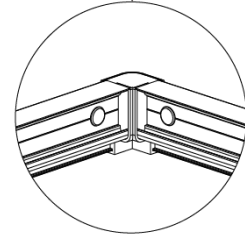
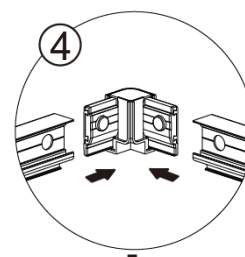
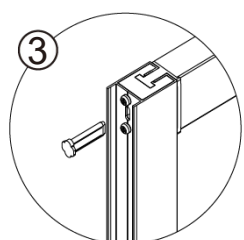
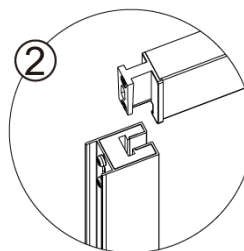
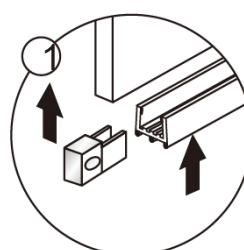
Flat Screw
M4x35



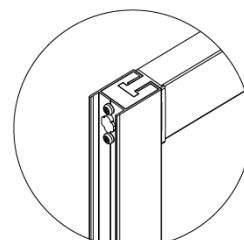
Step 2



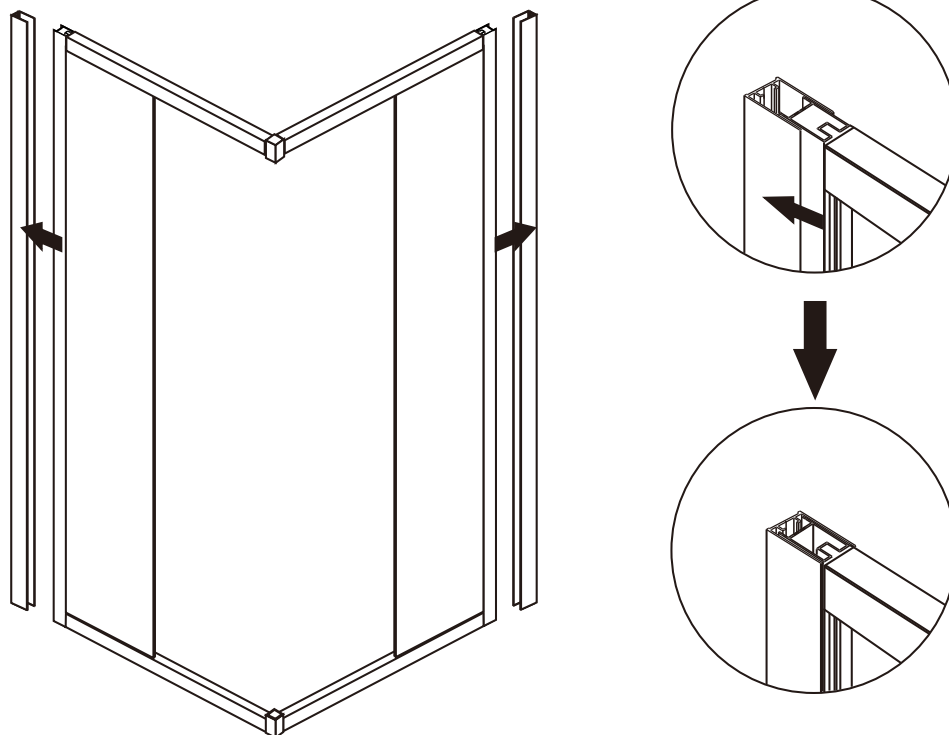
Screw M4x10



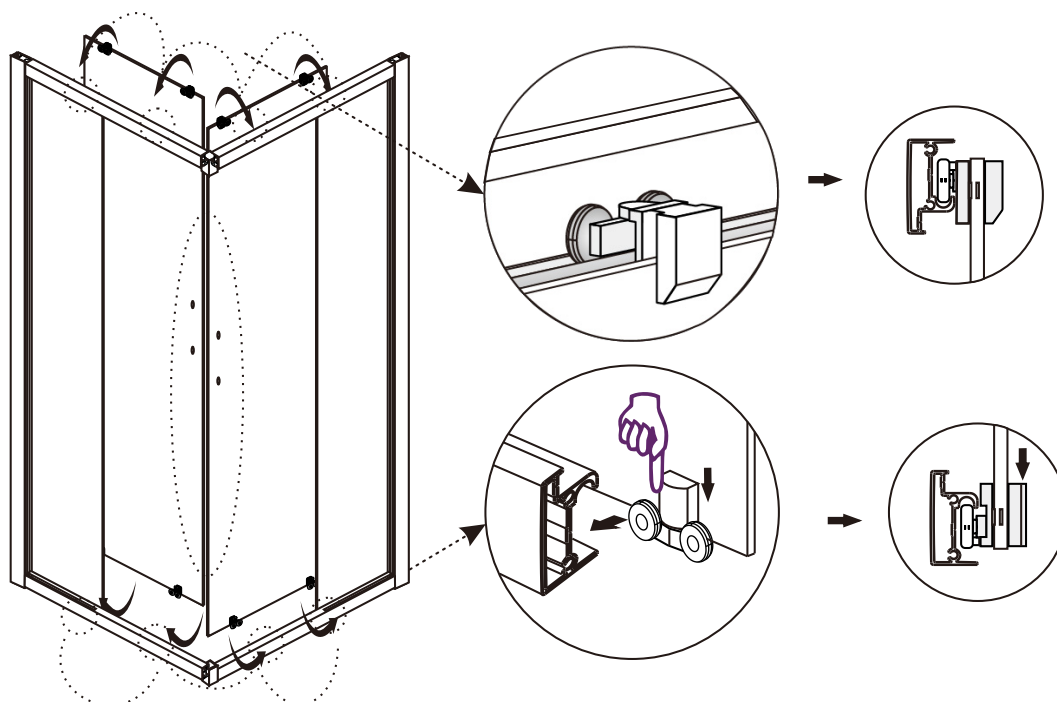
View from inside



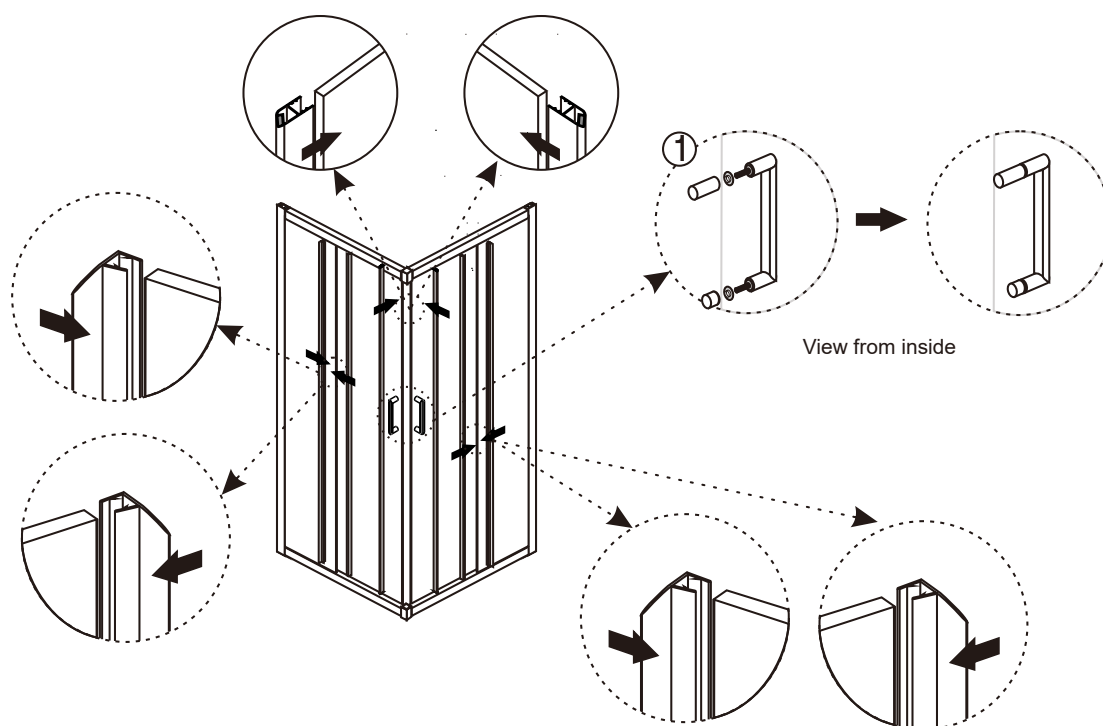
Step 3



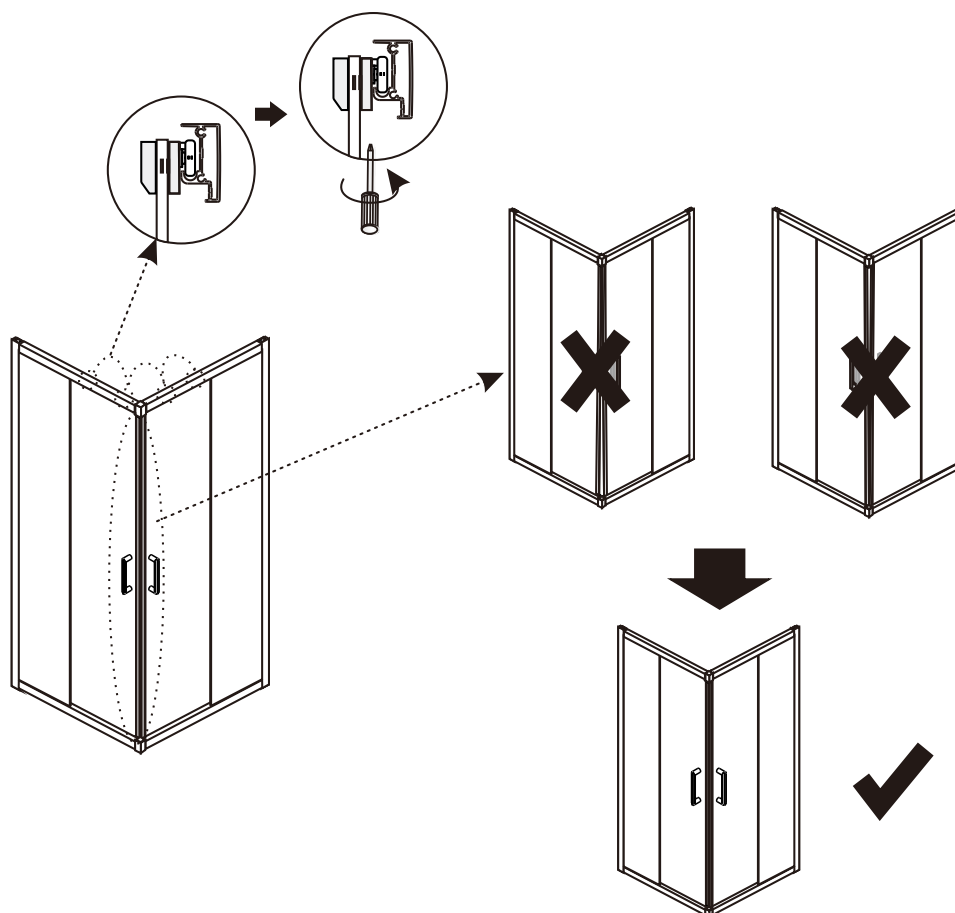
Step 4



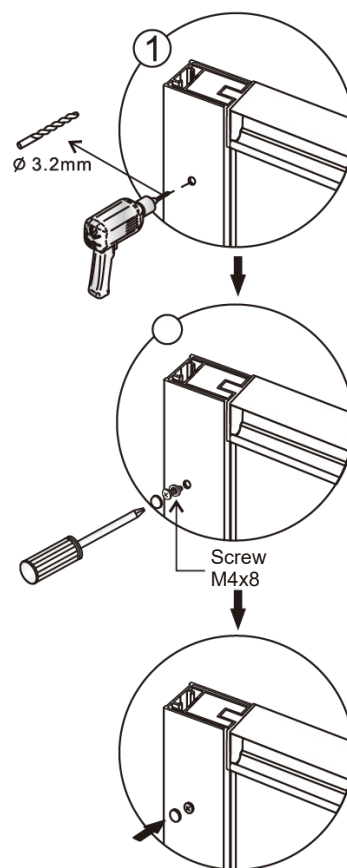
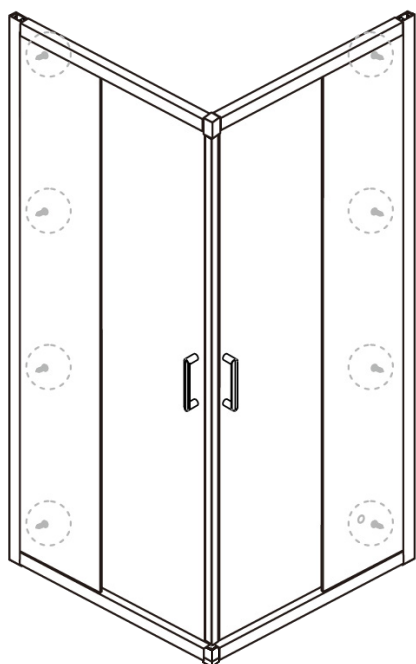
Step 5



Step 6

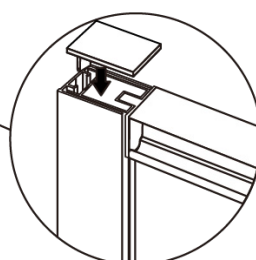
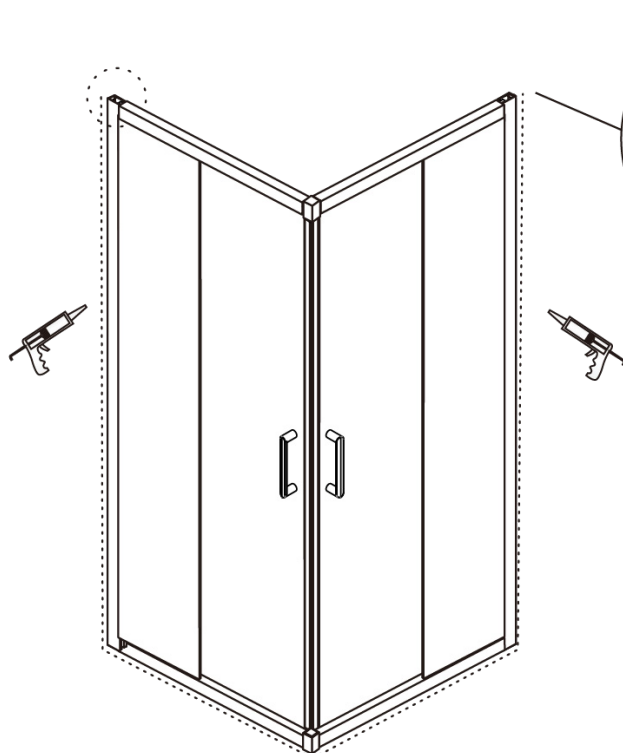


Step 7



View from inside

Step 8



View from inside



Allow 24 hours for silicone to dry before use.