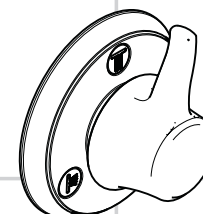
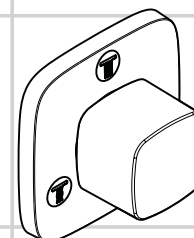


DE	Gebrauchsanleitung / Montageanleitung	2
FR	Mode d'emploi / Instructions de montage	2
EN	Instructions for use / assembly instructions	2
IT	Istruzioni per l'uso / Istruzioni per Installazione	2
ES	Modo de empleo / Instrucciones de montaje	3
NL	Gebruiksaanwijzing / Handleiding	3
DK	Brugsanvisning / Monteringsvejledning	3
PT	Instruções para uso / Manual de Instalação	3
PL	Instrukcja obsługi / Instrukcja montażu	4
CS	Návod k použití / Montážní návod	4
SK	Návod na použitie / Montážny návod	4
ZH	用户手册 / 组装说明	4
RU	Руководство пользователя / Инструкция по монтажу	5
HU	Használati útmutató / Szerelési útmutató	5
FI	Käyttöohje / Asennusohje	5
SV	Bruksanvisning / Monteringsanvisning	5
LT	Vartotojo instrukcija / Montavimo instrukcijos	6
HR	Upute za uporabu / Uputstva za instalaciju	6
TR	Kullanım kılavuzu / Montaj kılavuzu	6
RO	Manual de utilizare / Instrucțiuni de montare	6
EL	Οδηγίες χρήσης / Οδηγία συναρμολόγησης	7
SL	Navodilo za uporabo / Navodila za montažo	7
ET	Kasutusjuhend / Paigaldusjuhend	7
LV	Lietošanas pamācība / Montāžas instrukcija	7
SR	Uputstvo za upotrebu / Uputstvo za montažu	8
NO	Bruksanvisning / Montasjeveiledning	8
BG	Инструкция за употреба / Ръководство за монтаж	8
SQ	Udhëzuesi i përdorimit / Udhëzime rreth montimit	8
AR	دليل الاستخدام / تعليمات التجميع	9



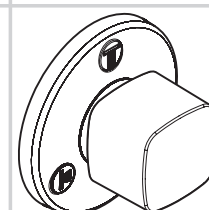
Trio / Quattro Classic

15934XXX



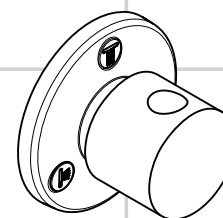
Trio / Quattro PuraVida

15937XXX



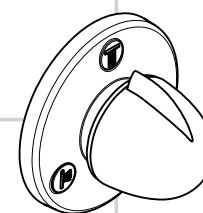
Trio / Quattro Metris

31634000



Trio / Quattro S

15932000



Trio / Quattro E

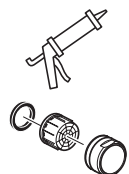
15931000

**! Indicaciones de seguridad**

- ⚠ Durante el montaje deben utilizarse guantes para evitar heridas por aplastamiento o corte.

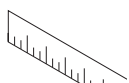
Indicaciones para el montaje

Antes del montaje se debe examinarse el producto contra daños de transporte. Después de la instalación se reconoce ningún daño de transporte o de superficie.



No utilizar silicona que contiene ácido acético!

Dimensiones (ver página 14)

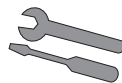


Repuestos (ver página 12)



Marca de verificación (ver página 15)

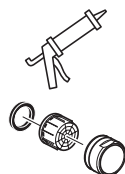
**Montaje
ver página 10**

**! Veiligheidsinstructies**

- ⚠ Bij de montage moeten ter voorkoming van knel- en snijwonden handschoenen worden gedragen.

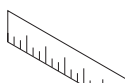
Montage-instructies

Vóór de montage moet het product gecontroleerd worden op transportschade. Na de inbouw wordt geen transport- of oppervlakteschade meer aanvaard.



Gebruik geen zuurhoudende silicone!

Maten (zie blz. 14)



Service onderdelen (zie blz. 12)



Keurmerk (zie blz. 15)

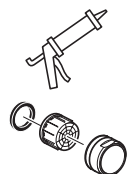
**Montage
zie blz. 10**

**! Sikkerhedsanvisninger**

- ⚠ Ved monteringen skal der bruges handsker for at undgå kvæstelser og snitsår.

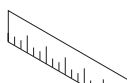
Monteringsanvisninger

Før monteringen skal produktet kontrolleres for transportskader. Efter monteringen godkendes transportskader eller skader på overfladen ikke længere.



Der må ikke benyttes eddikesyreholdig silikone!

Målene (se s. 14)

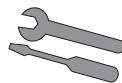


Reservedele (se s. 12)



Godkendelse (se s. 15)

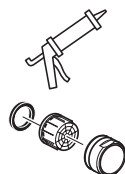
**Montering
se s. 10**

**! Avisos de segurança**

- ⚠ Durante a montagem devem ser utilizadas luvas de protecção, de modo a evitar ferimentos resultantes de entalamentos e de cortes.

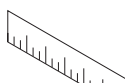
Avisos de montagem

Antes da montagem deve-se controlar o produto relativamente a danos de transporte. Após a montagem não são aceites quaisquer danos de transporte ou de superfície.



Não utilizar silicone que contenha ácido acético!

Medidas (ver página 14)

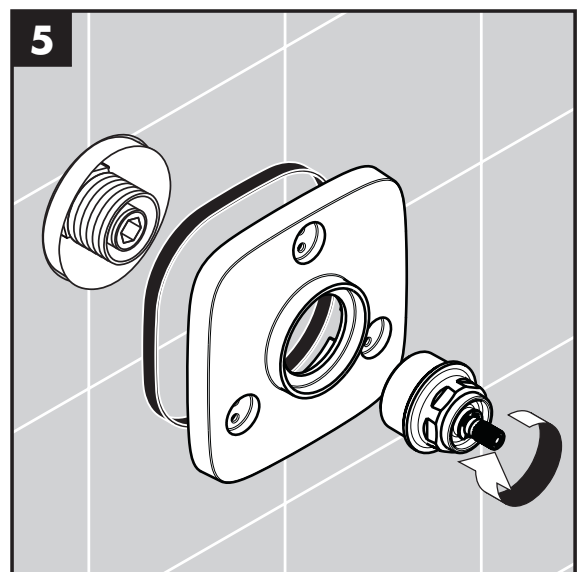
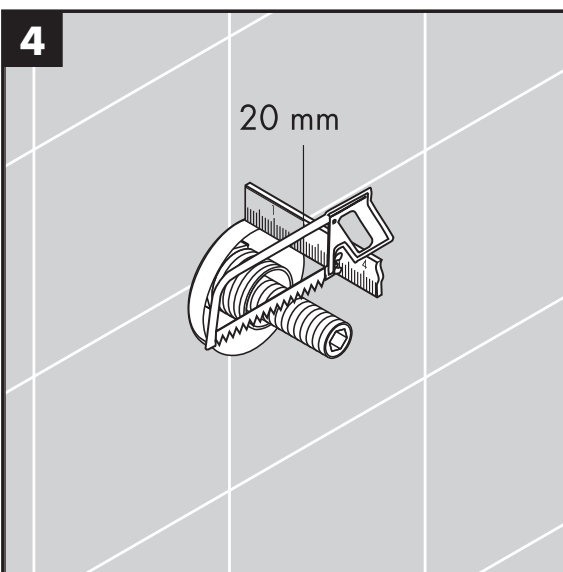
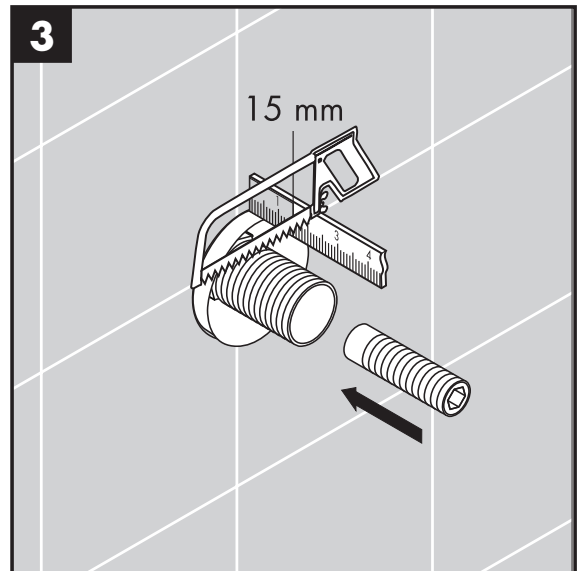
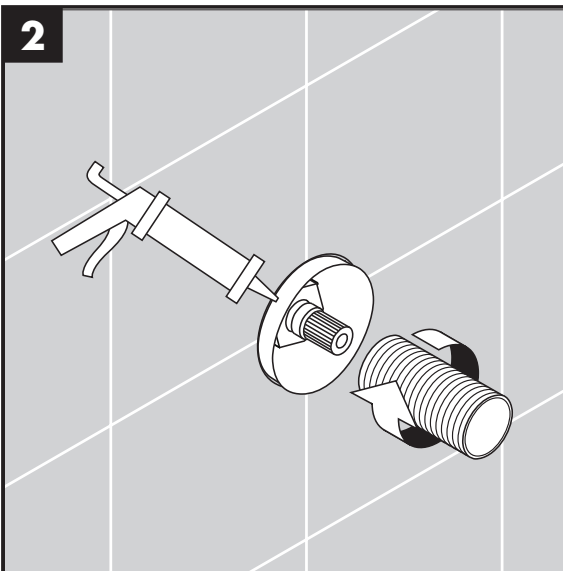
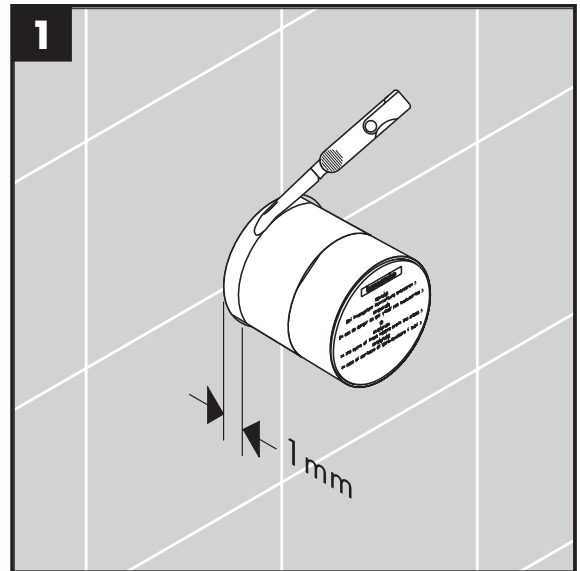
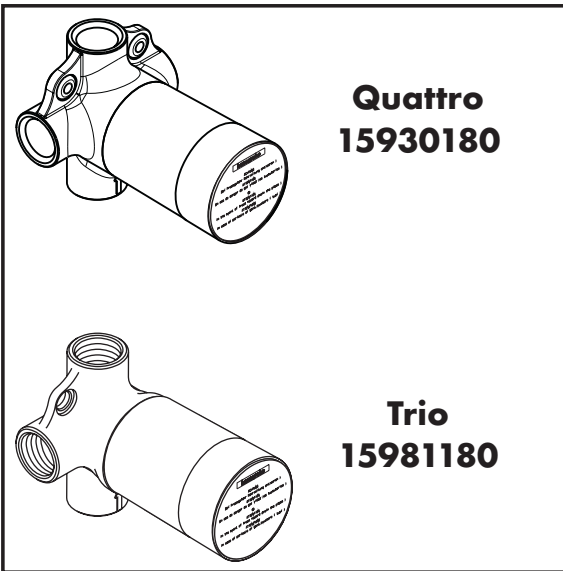
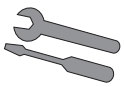


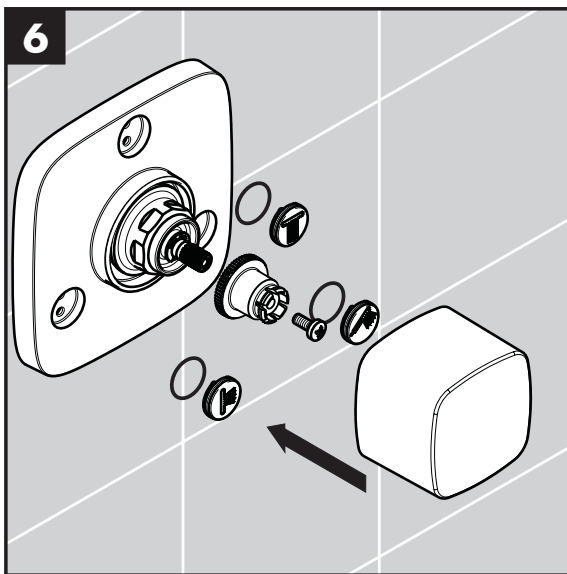
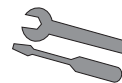
Peças de substituição (ver página 12)

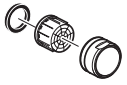


Marca de controlo (ver página 15)

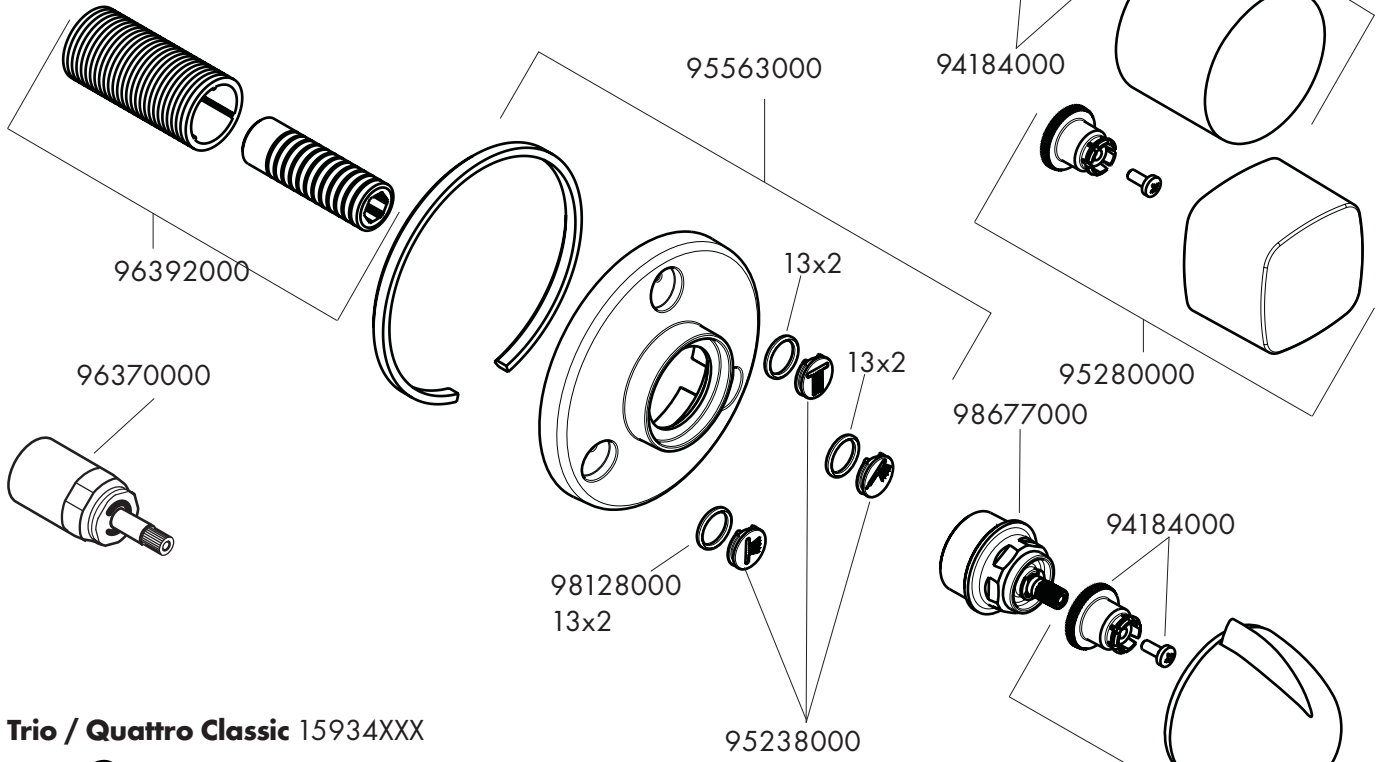
**Montagem
ver página 10**



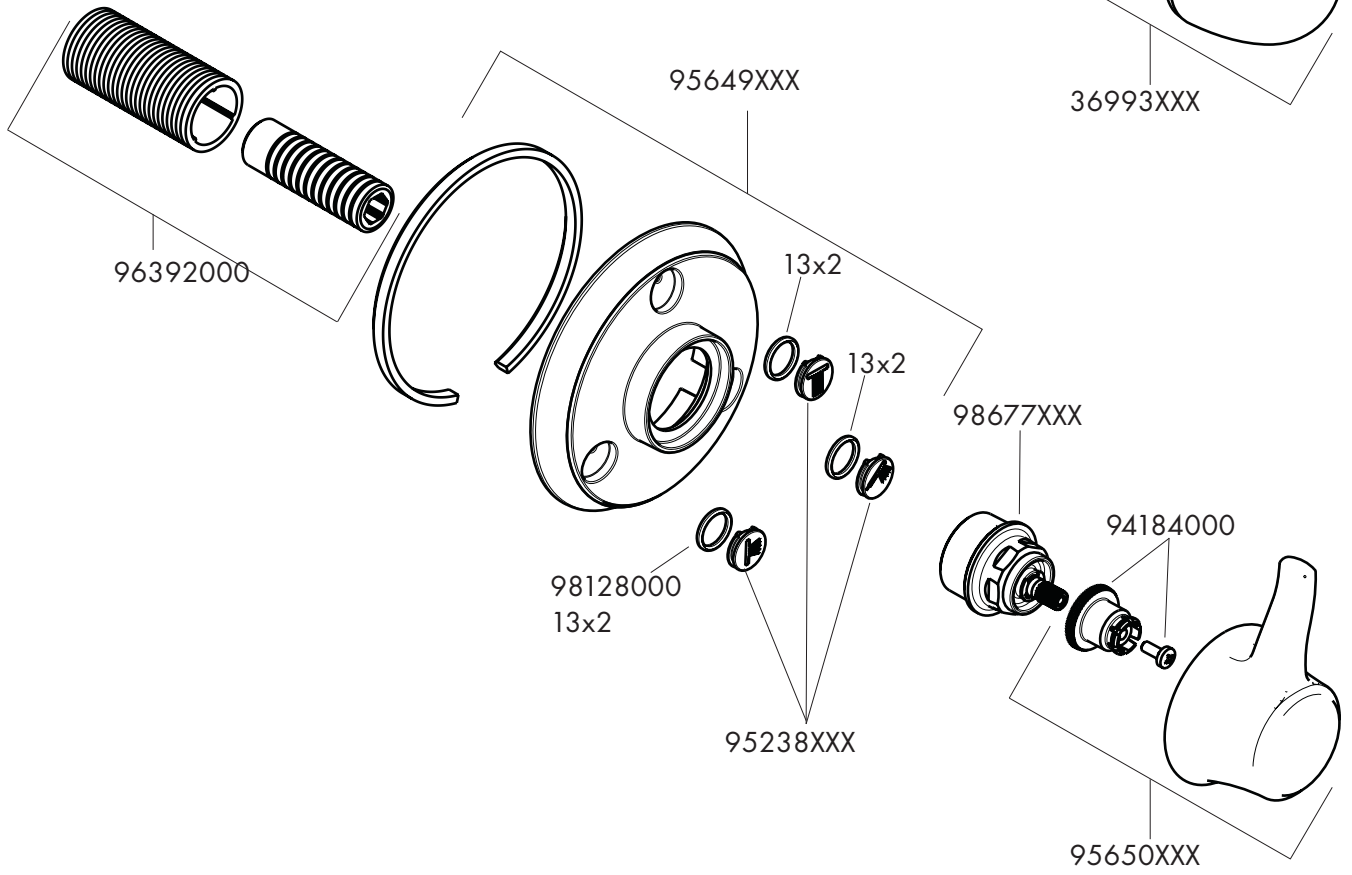




Trio / Quattro E 15931000
Trio / Quattro S 15932000
Trio / Quattro Metris 31634000

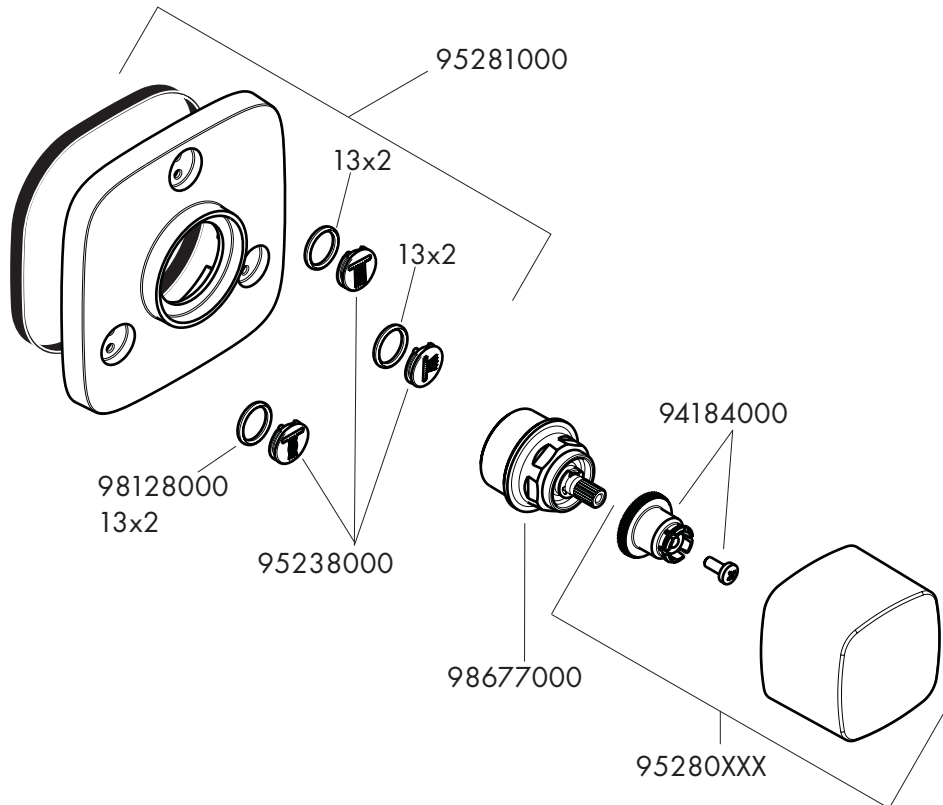


Trio / Quattro Classic 15934XXX





Trio / Quattro PuraVida 15937XXX



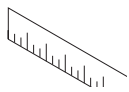
XXX = Farbcodierung // Couleurs // Colors // Trattamento // Acabados // Kleuren // Overflade // Acabamentos //
 Kody kolorów // Kód povrchové úpravy // Farebné označenie // 颜色代码 // Цветная кодировка //
 Színkódolás // Värikoodaus // Färgkodning // Spalvos // Boje // Renkler // Coduri de culori // Χρώματα //
 الألوان // Barve // Värvid // Krāsu kodi // Označe boja // Fargekode // Цветово кодиране //

Kodimi me anë të ngjyrave

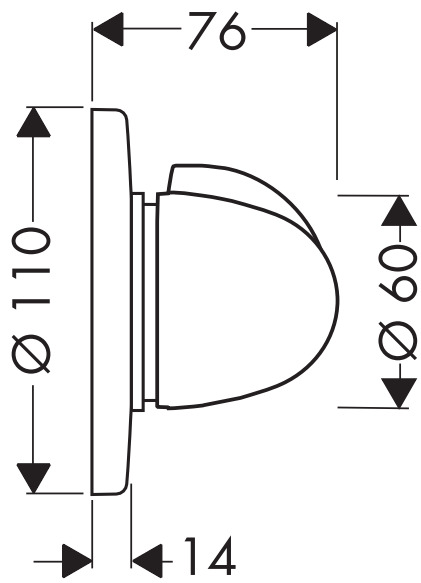
000 = chrom // chromé // chrome plated // cromato // cromado // verchromd // Krom // cromado // chróm //
 镀铬 // хром // króm // kromi // krom // crom // Επιχρωμιωμένο // كروم // kroom // hroma // hrom //
 хром

400 = weiß/chrom // blanc/chromé // white/chrome plated // bianco/cromato // blanco/cromado //
 wit/verchromd // Hvid/Krom // branco/cromado // biały/chrom // bílá/chrom // biela/chróm //
 白色/镀铬 // белый/хром // fehér/króm // valkoinen/kromi // vit/krom // balta/chrom // bijela/krom //
 beyaz/Krom // alb/crom // λευκό/Επιχρωμιωμένο // أبيض/كروم // bela/krom // valge/kroom //
 balta/hroma // bela/hrom // hvit/krom // бял/хром // e bardhë/krom

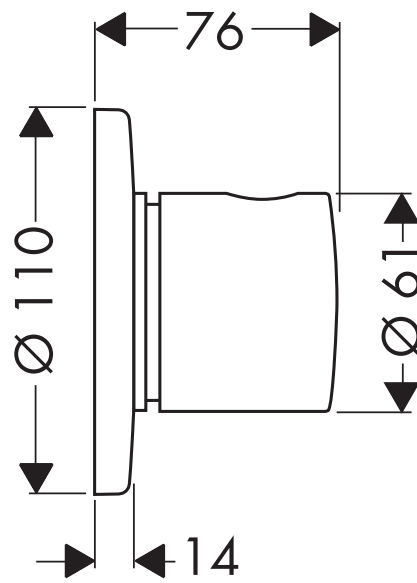
820 = brushed nickel / nikiel szorowany / 镍拉丝 / harjattu nikkeli / borstad nickel / nichel mat / νικελ ματ /
 børstet nikkel / надраскан никел / nikel i fuçuar / نیکل مُفرّش



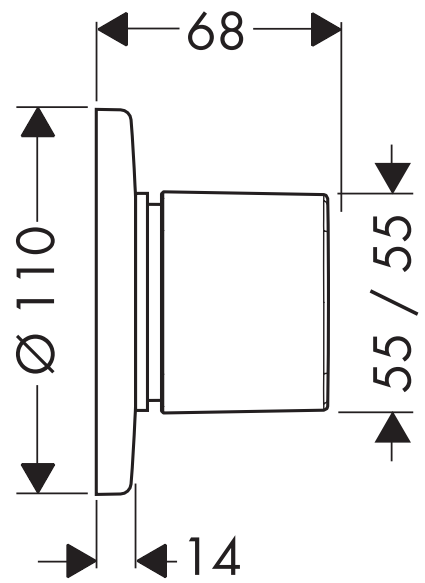
Trio / Quattro E 15931000



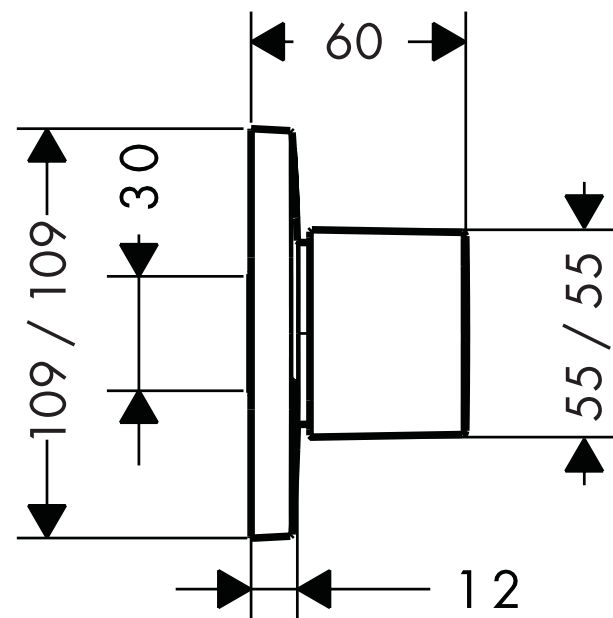
Trio / Quattro S 15932000



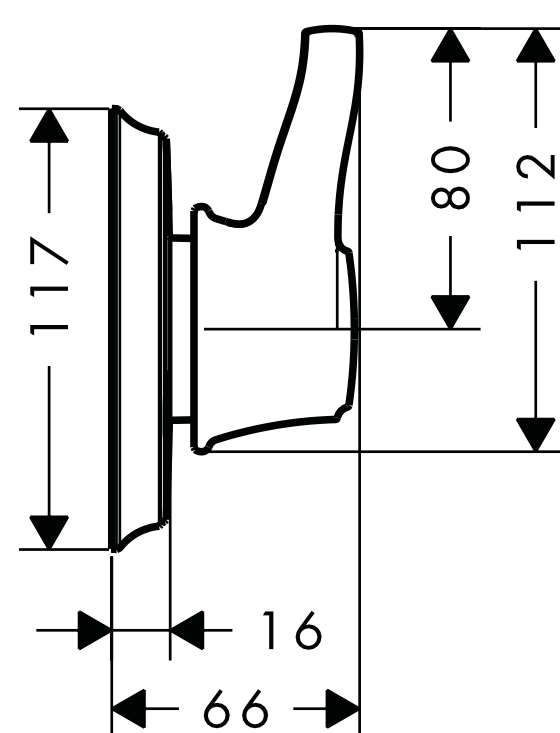
Trio / Quattro Metris 31634000



Trio / Quattro PuraVida 15937XXX



Trio / Quattro Classic 15934XXX





	P-IX	DVGW	SVGW	WRAS	KIWA	NF	ACS	ETA
15931000			X	X			X	
15932000			X	X			X	
15934XXX				X				
15937XXX			X	X				
31634000				X				

hansgrohe

Hansgrohe · Austraße 5 - 9 · D-77761 Schiltach · Telefon +49 (0) 78 36/51-1282 · Telefax +49 (0) 7836/511440
E-Mail: info@hansgrohe.com · Internet: www.hansgrohe.com

09/2012
9.08.465.07